



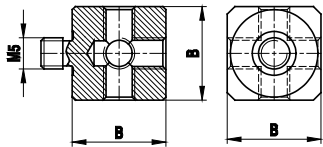
OPERANDI

Cube adapters and accessories

itpstyli offers many options and features for M5 Cubes and Accessories. Review this interactive PDF with links to help find what you need.

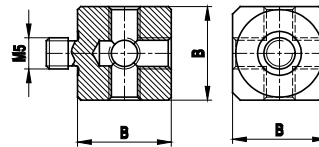
M5 Standard Cube (Aluminium)

M5 Threading in Aluminum is available in 15 mm or 20 mm. These cubes are the base design for 3 other versions



M5 Standard Cube (Titanium)

M5 Threading in Titanium is available in 15 mm or 20 mm. These cubes are the base design for 3 other versions

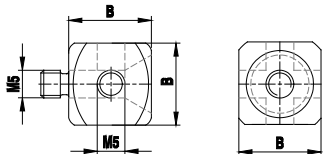


The standard M5 cube has 3 variations to provide flexibility for:

- Clocking ⌚
- Alternating face attachment
- The use of M2 threading to reduce profile size.

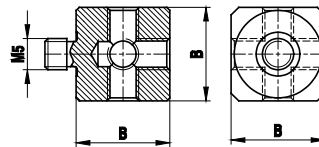
M5 Countersunk Cube (Titanium)

4-Way cube with a loose counter sunk M5 threaded bolt provides clocking while minimizing bottom-side interference



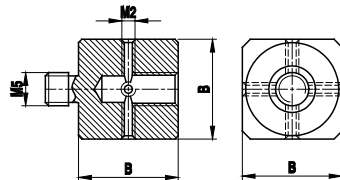
M5 Loose Set Cube (Titanium)

M5 external thread is a removable screw to allow flexibility in choosing the attachment face. 15 mm or 20 mm.



M5/internal M2 Cube (Titanium)

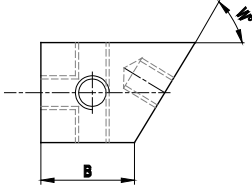
These cubes have an M5 external thread and internal M2 threads to accommodate lower profile styli and accessories.





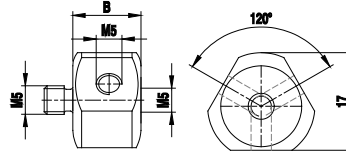
M5 Cube With Angle (Titanium)

These cubes contain an M5 removable screw to allow flexibility in choosing the attachment face. 18 angle versions ranging from 45° to 87.5° angles. 15mm face. (#16-33 on the linked table)



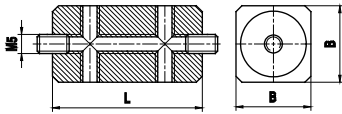
M5 4-Way Cube (Titanium)

Three internal M5 threads, 120 degrees apart on the horizontal and one on the bottom.



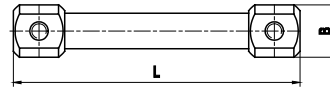
M5 Double Cube (Titanium)

Contains nine internal M5 threads 20 x 40 mm long in titanium.



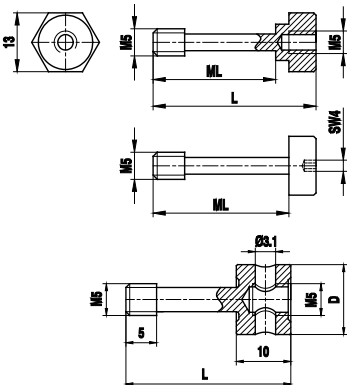
M5 Cube Extension (Titanium)

Two 20mm cubes with M5 internal threads joined for total length of 120mm provides extended flexibility.



M5 Through Screws

Titanium and Stainless steel screws create more options for mounting and adding additional styli. Check Lengths to match with cube size.



M5 Leitz Cube (Titanium)

These cubes are of original Leitz titanium design

