

# itpstyli Calibration Spheres



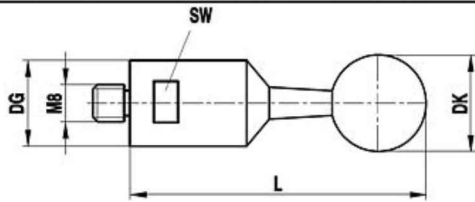
itpstyli offers 4 standard calibration spheres with an overall length ranging from 130 to 145mm and sphere diameters between 15 and 30mm.

The base and stem of these calibration spheres are stainless steel. Ceramic spheres are grade 6.

Sphere stems can also be engraved with the serial number upon request for only \$15.00 each.

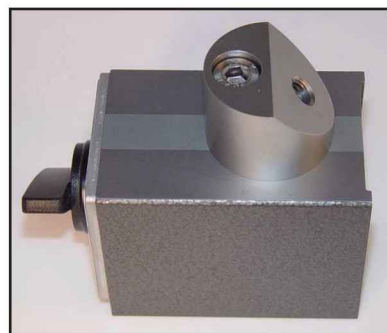
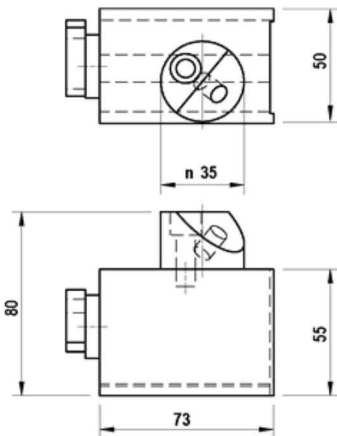
Internal certificate according DIN EN ISO 9001:2000 Reg Nr. 09 100 75091			
Object	Calibration	Serial No.	
Material	Al2O3	<b>0098</b>	
Diameter in mm	15,0005	Uncertainty in $\mu\text{m}$	+/- 0,15
Form deviation in $\mu\text{m}$	0,11	Uncertainty in $\mu\text{m}$	< 0,08
Date of measurement	20.02.2006		

All itpstyli calibration spheres are certified at production and are supplied with a certification. To the left is an example of a certificate supplied with every purchase.



DK	L	DG D	SW	Part Number	Price
15.0	130.0	24.0	22.0	KN M8 150 24 130	245.00
20.0	135.0	24.0	22.0	KN M8 200 24 135	298.00
25.0	140.0	24.0	22.0	KN M8 250 24 140	328.00
30.0	145.0	24.0	22.0	KN M8 300 24 145	349.00

45° calibration base with aggressive magnet and quick release provides maximum location flexibility.



The standard thread base is M8, but can be adapted to M10 with an additional adapter.

All adapters are stainless steel with a diameter of 24mm.

Body Material	Part Number	Price
Stainless Steel	MAGNETFUSS KNM8	278.00

Description	Length	Part Number	Price
M6 External to M8 Internal	29.0	S RI M6 800 24 029	186.00
M10 External to M8 Internal	30.0	S RI M10 M8 24 030	186.00